



The ARMIS ONE mobile vehicle barrier effectively protects public events from hostile vehicle attacks and regulates their access routes. Access and escape routes remain passable at all times and visibility is unrestricted.

Effective protection – easy to fold down

If access is required for emergency vehicles or deliveries, the barrier elements can be folded down manually in a matter of seconds. Installation is quick and easy thanks to the integrated, foldable ramps.

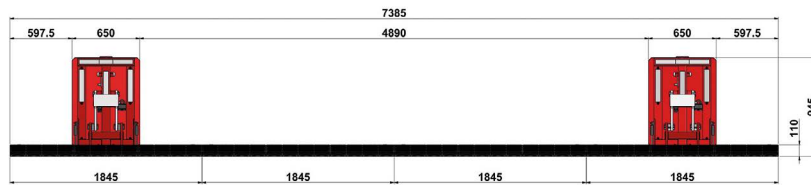
The advantages of ARMIS ONE

- certified as single element according to latest standards
- manually foldable barrier segments
- low penetration depth (8.3 metres)
- quick deployment thanks to integrated, foldable ramps
- clever logistics concept (storage/transport)
- standard-compliant passage and escape route widths
- unhindered passage with wheelchair/pushchair
- tamper-proof – no guarding required
- non-slip surfaces

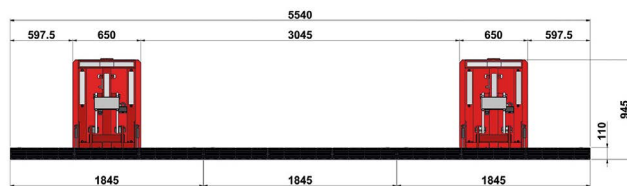
Technical specifications

| | |
|---|--|
| Elements | Base module with foldable ramps made of solid rubber |
| Construction | Galvanised steel with exchangeable non-slip supports and four connection points |
| Width | 1'845 mm |
| Length with folded ramps | 1'320 mm |
| Length in walking/driving direction incl. ramps | 3'410 mm |
| Height from ground | 110 mm |
| Weight complete module incl. ramps | 770 kg |
| Passability | 40 t (D400) |
| Axle load module | 10 t |
| Impact resistance / impact load | 750'000 joule (breakout resistance) |
| Certifications | ISO 22343-1:2033 and DIN SPEC 91414-1 with 7.2t@48km/h, incl. displacement and manipulation test (MK2), penetration depth: 8.3 metres, displacement: less than 10 cm, V/7200[N2A]/48/90:8.3/0.00 |
| Options | <ul style="list-style-type: none"> ■ Special non-slip surfaces ■ Handrails (short/long) ■ Heavy-duty pallet for storage and transport ■ Cover plates for heavy-duty pallets ■ Reflective strips for ramps ■ Side end ramps |

The ARMIS ONE blocking module can be used individually or as a chain of several modules.

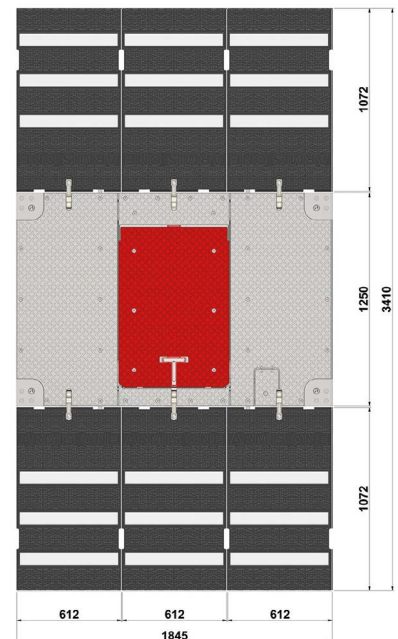


Barrier with four elements: two closed, two lowered. Passage width: 4.9 metres.

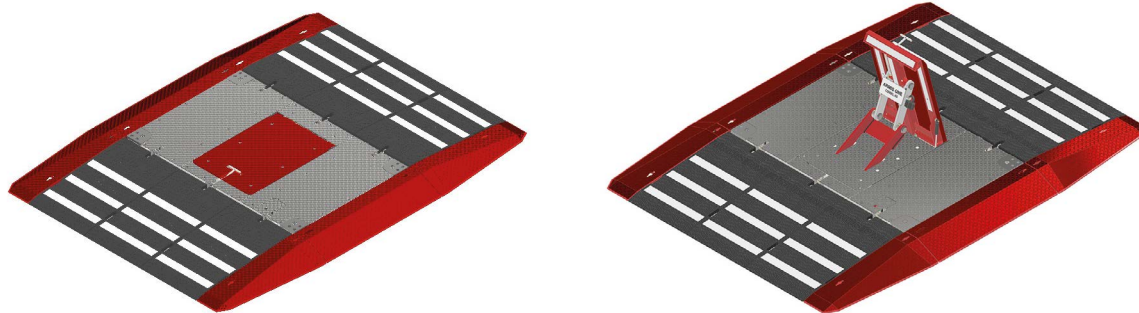


Barrier with three elements: two closed, one lowered. Passage width: 3 metres.

Dimensions of a barrier element with ramps:



Barrier with optional side ramps



Heavy-duty pallets for barrier modules

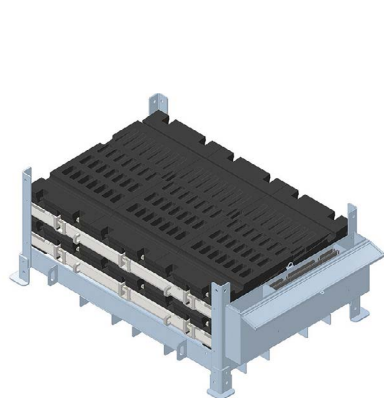


Illustration:
two barriers stacked

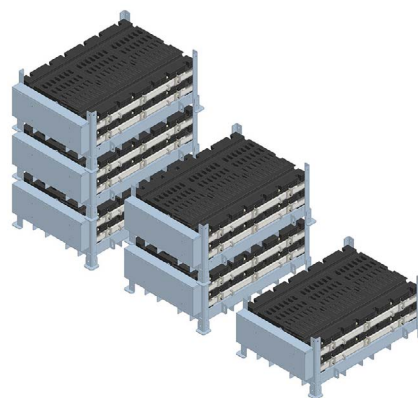


Illustration:
multiple stacked pallets