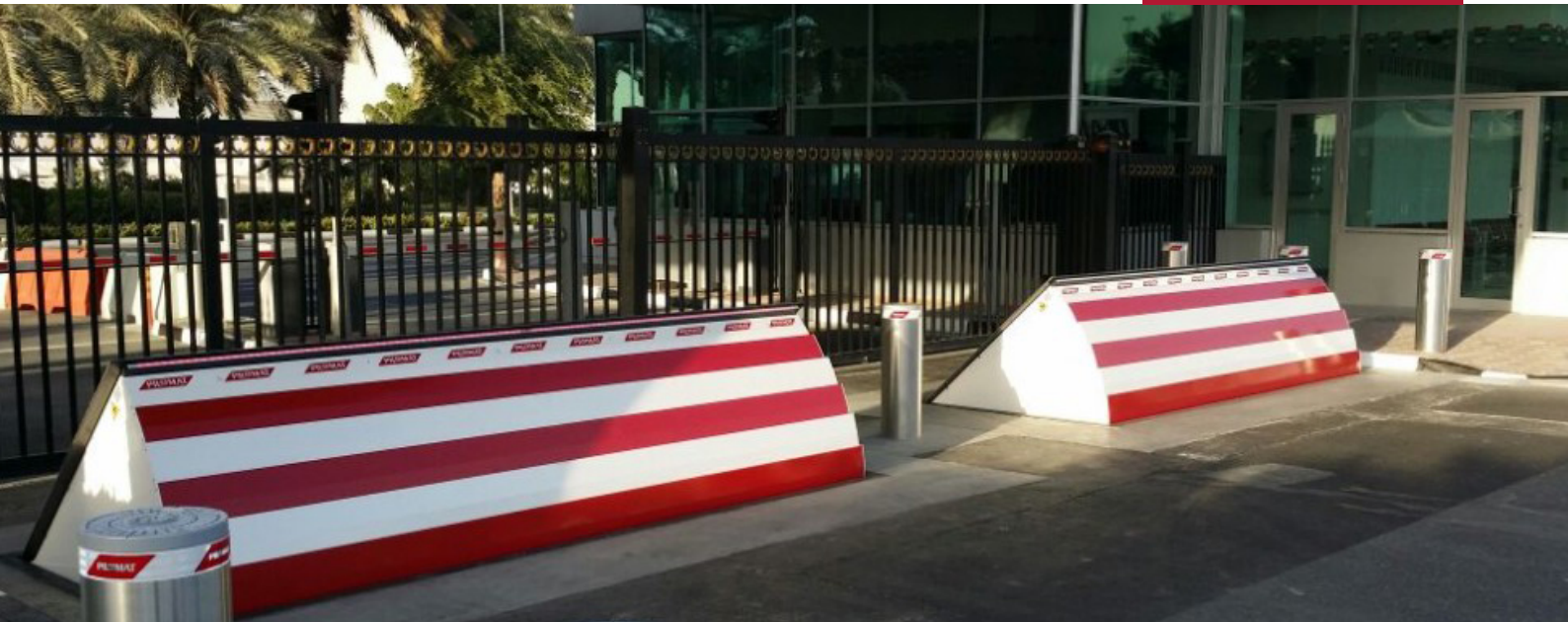


ARMIS RB500-M30

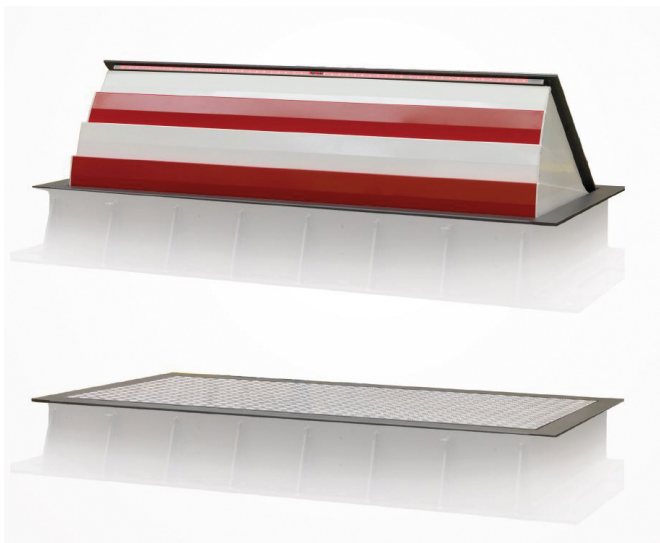
ARMIS Roadblocker RB500 are built «shallow mounted». That means they only require a 300 mm foundation depth. This allows easy and cost-effective installation, independent of existing facilities such as cable ducts, drainage systems, etc. Furthermore, ground level mounting on slopes is possible.

This roadblocker is a non-certified basic version, developed in accordance with PAS68:2013 (7.5 t@50 km/h), IWA 14-1:2013 7.2 t@48 km/h) and ASTM M30/DOS

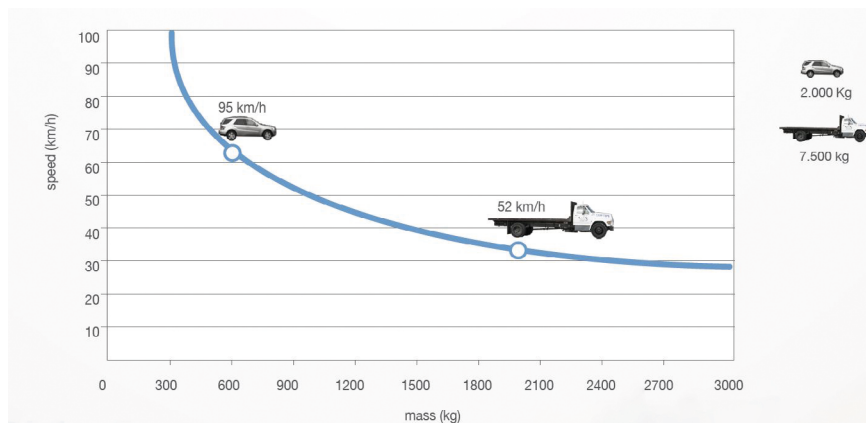
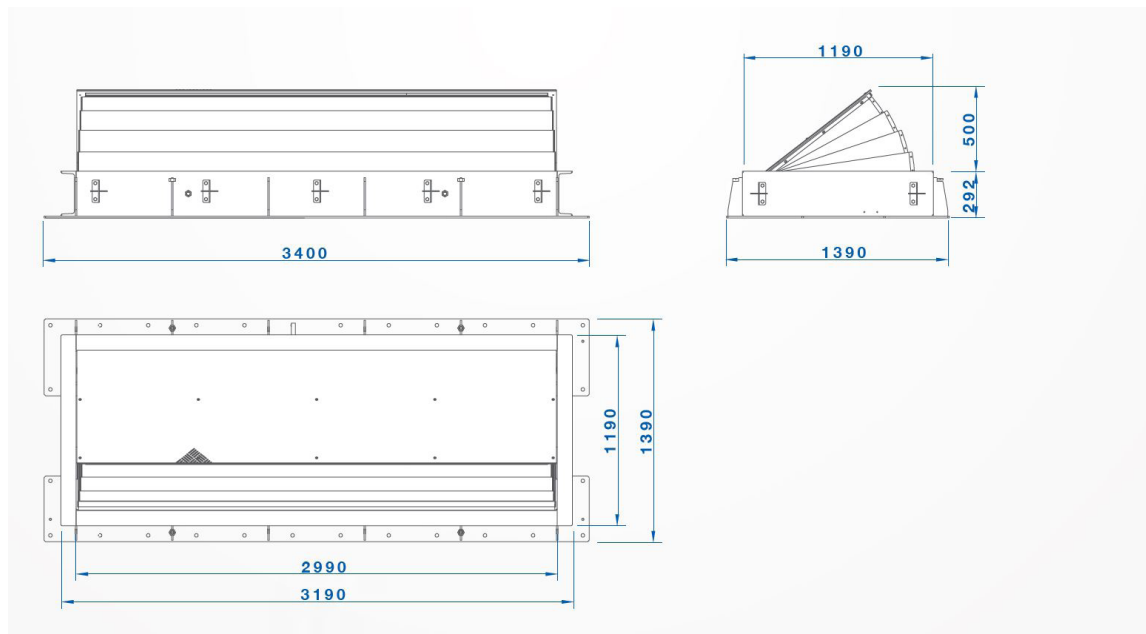
K4 (6.8t@50km/h) standards. It is suitable for access protection of company headquarters, hotels, convention centers or other areas with moderate protection requirements.

For high security requirements we recommend the Roadblocker RB1000 (height 1000mm) with an impact load of 2'000'000 joules, certified according to PAS68:2013 (7.5t@80km/h).

Main features



- Height from floor: 500 mm
- Width: 2/3/4/5/6 m
- Foundation depth: 300 mm
- Impact load: 750'000 joule



Technical specifications

Height from ground	500 mm
Width	Standard: 2 m, 3 m, 4 m, 5 m, 6 m
Foundation depth	300 mm
Type of drive	Hydraulic
Rising speed	5 s
Lowering speed	5 s
Coverplate	Normal steel / antislip, optional: stainless steel / antislip
Passability	UNI D400
Type of use	Intensive (2'000 cycles/day), life units: 3'000'000 cycles
Voltage for control unit	230 V - 50/60 hz
Reflector tape / LED lighting	Yes, height: 55 mm / optional
Impact load	750'000 Joule
Connection line to the control unit	Standard: 10 m (maximum length: 30 m)